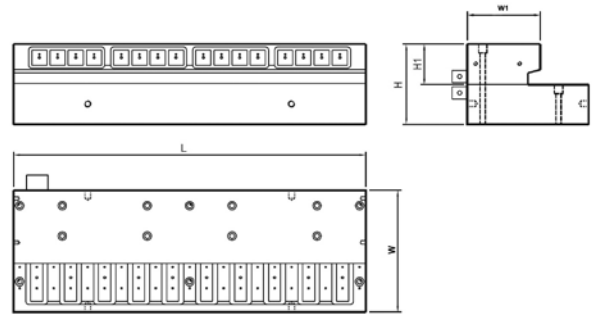
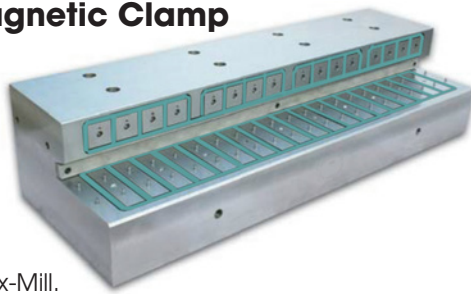


EPM

# TURBO MAX-RAIL

SQUARE & LONG-POLE ELECTROPERMANENT MAGNET CLAMP

## Rail Machining Magnetic Clamp



### FEATURES

- A variation of Turbo Max-Mill.
- One set-up, quick-clamp with clamping force of 18 T/M.
- no electricity consumed during actual operation.
- Vibration-free, strong and uniform clamping.
- Zero stray magnetic fields and zero magnetization of the cutting tool.

### APPLICATIONS

Uniform machining of Rails, crossings & rail switching elements.



EPM

# TURBO MAX-FLAME

ELECTROPERMANENT MAGNET CLAMP

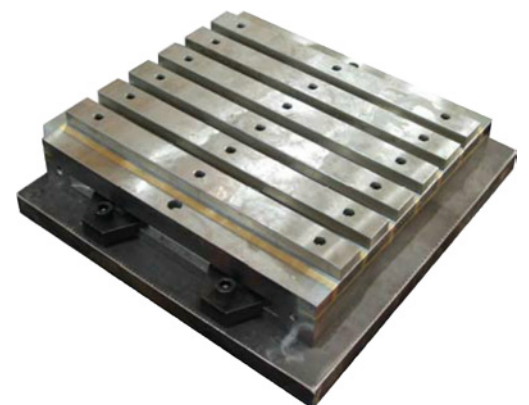
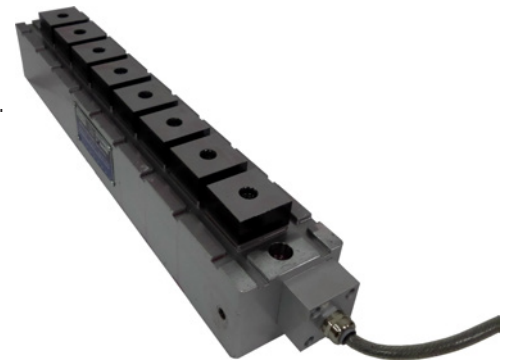
## Magnetic Clamp for Flame cutting applications

### FEATURES

- Enhanced High temperature tolerance with Samarium Rare-Earth magnets.
- A variation of Turbo Max-Mill or Turbo Max-Entry.
- One set-up, quick-clamp with clamping force of 14 Kg/cm<sup>2</sup>.
- no electricity consumed during actual operation.
- Vibration-free, strong and uniform clamping.
- Zero stray magnetic fields and zero magnetization of the cutting tool.

### APPLICATIONS

- Underplate support for welding levelling.
- CNC flame cutting material support.



MILLING

